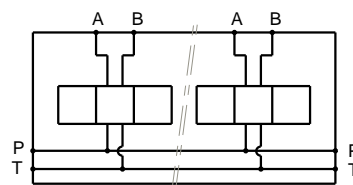


Stations	X	Y	(kg)
1	80	56	5.80
2	160	136	11.30
3	240	216	17.00
4	320	296	22.70
5	400	376	28.50
6	480	456	34.20
7	560	536	39.90
8	640	616	45.60



Technical specifications	
Material	: Cast iron EN-GJL-250 _ Phosphatation
Pressure	: 300 bar max
Flow rate	: 120 L/mn max
Options	: P and/or T not drilled through
	: zinc plating
	: to 12 stations

Designation code :

MR - 5 - * . G

MECABOR

CETOP 5
side entry

G : ports BSP

Station number