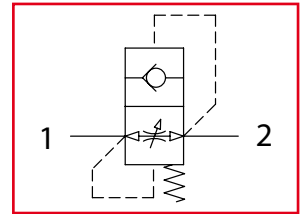


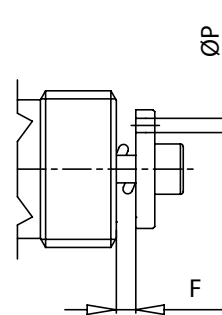
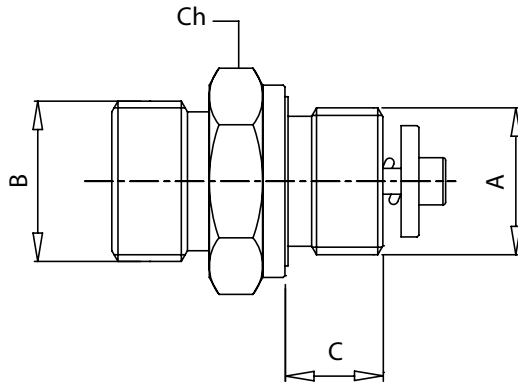
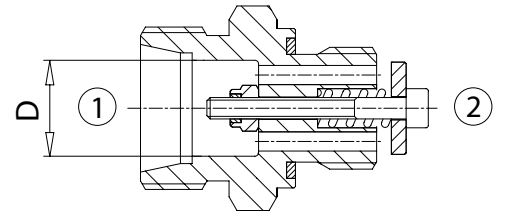


VUBADIN

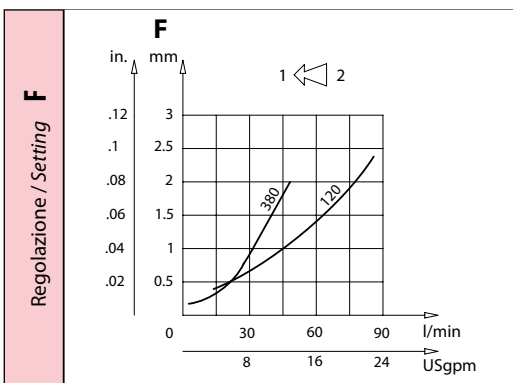
Valvole unidirezionali registrabili DIN
DIN Adjustable check valves



Dati tecnici Technical data	
Viscosità fluido Fluid viscosity	10-500 mm ² /s 45 to 2000 ssu (6 to 420 cSt)
Classe di contaminazione Filtration	ISO code 16/13 SAE class 4 or better
Temperatura fluido Fluid temperature	-20°C +80°C -4°F +176°F
Temperatura ambiente Ambient temperature	-20°C +50°C -4°F +122°F



[mm
(Inches)



Codice ordinazione Ordering code			
VUBA-X-Y-K-Z			
X	Dimensione / Size	K	Regolazione / Setting
380	BSPP 3/8	F _{...}	Esempio: regolazione 0,7 mm Example: setting 0.7 mm
120	BSPP 1/2		F0,7
Y	Dimensione / Size		Omettere se non richiesto Omit if not required
T10	Per tubo Ø 10 For Ø 10 pipe	Solo VUBA380 VUBA380 only	Z
T12	Per tubo Ø 12 For Ø 12 pipe		Foro sul piattello Hole on flat poppet
T15	Per tubo Ø 15 For Ø 15 pipe		
		P _{...}	Esempio: foro 1,5 mm Example: hole 1,5 mm
			P1,5
			Omettere se non richiesto Omit if not required

Caratteristiche tecniche Technical performances

Codice Code	A	Portata Max Max flow l/min - USgpm	Pressione Max Max pressure bar/PSI	B	C	D	Coppia max di serraggio raccordo (Nm) Max fitting tightening torque (lbf ft)	Coppia max di serraggio tubo (Nm) Max tightening torque for hose (lbf ft)	Peso approssimativo Approx weight Kg / lb
VUBA380T10	BSPP 3/8	50 (13)	315 (4500)	M16 x 1,5	11 (0.43)	10 (0.39)	70 (50)	20 (15)	0,035 (0.08)
VUBA380T12				M18 x 1,5		12 (0.47)		40 (30)	0,038 (0.085)
VUBA380T15				M22 x 1,5	15 (0.59)	70 (50)		0,040 (0.09)	
VUBA120T15	BSPP 1/2	80 (21)			13 (0.51)	15 (0.59)	85 (65)	70 (50)	0,045 (0.10)