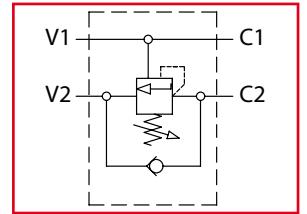




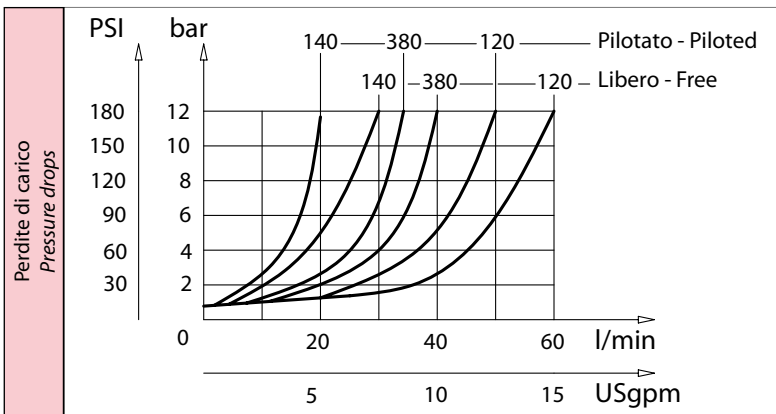
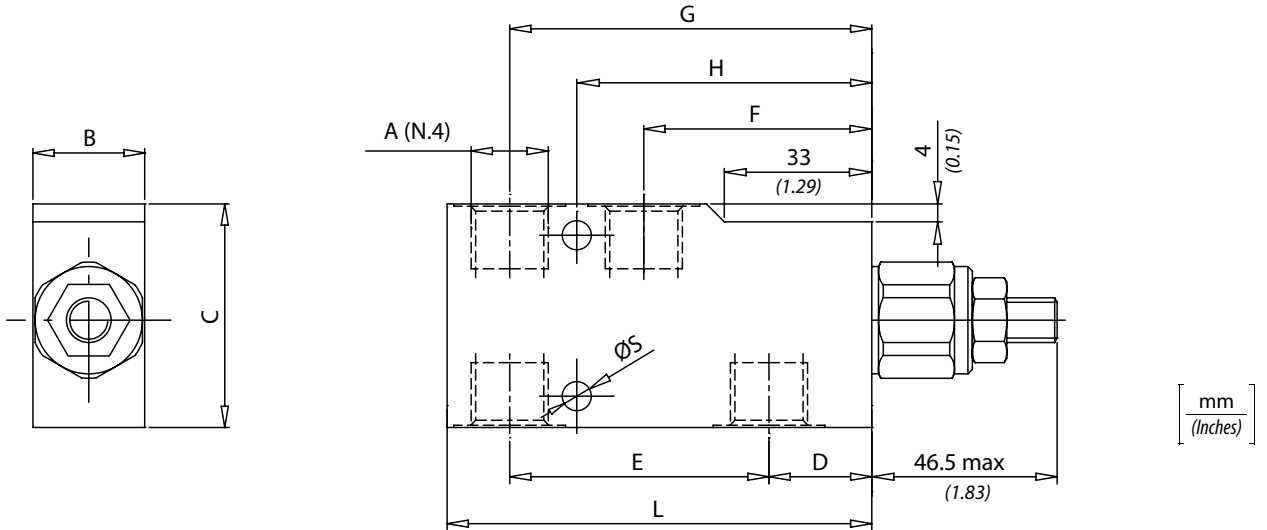
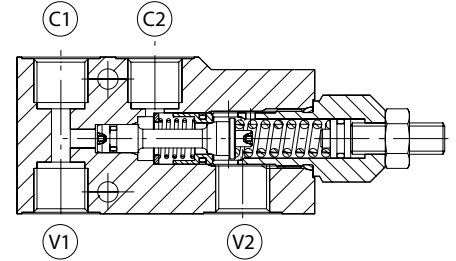
# VBCL

Valvole overcenter singole per centro aperto  
Single counterbalance valves for open center



Dati tecnici Technical data	
Viscosità fluido Fluid viscosity	10-500 mm <sup>2</sup> /s 45 to 2000 ssu (6 to 420 cSt)
Classe di contaminazione Filtration	ISO code 16/13 SAE class 4 or better
Temperatura fluido Fluid temperature	-20°C +80°C -4°F +176°F
Temperatura ambiente Ambient temperature	-20°C +50°C -4°F +122°F

Settaggio valvola di massima: almeno 1,3 volte il carico più alto usato.  
Relief valve setting: at least 1.3 times the highest expected load.



Codice ordinazione Ordering code				
<b>VBCL - X - Y - K - Z</b>				
<b>X</b>	Dimensione / Size	<b>K</b>	Materiale / Material	<b>Z</b> Optional
140	BSPP 1/4	S	Corpo in acciaio (Steel body)	
380	BSPP 3/8			
120	BSPP 1/2			
<b>Y</b>	Molla - Spring	Incremento pressione al giro Press. increase	Taratura standard Std. setting (Q=5 l/min)	
1	30/210 bar (400/3000 PSI)	70 bar/turn (1000 PSI/turn)	200 bar (2900 PSI)	
2	60/350 bar (850/3500 PSI)	120 bar/turn (1700 PSI/turn)	350 bar (5000 PSI)	

## Caratteristiche tecniche Technical performances

Codice Code	A	Portata Max Max flow l/min - USgpm	Pressione Max Max pressure bar/PSI	B	C	D	E	F	G	H	L	S	Peso approssimativo Approx weight Kg / lb	Rapporto di pilotaggio Pilot ratio
VBCL140	BSPP 1/4	30 (8)	350 (5000)	25 (0.98)	50 (1.97)	23 (0.90)	58 (2.28)	51 (2)	81 (3.19)	66 (2.60)	95 (3.74)	6,5 (0.26)	0,85 (1.90)	1:4.25
VBCL380	BSPP 3/8	40 (10.5)		30 (1.18)	60 (2.36)	21 (0.83)	63 (2.48)		84 (3.30)	67,5 (2.66)	100 (3.94)			
VBCL120	BSPP 1/2	60 (16)		21 (0.83)	63 (2.48)	63 (2.48)	63 (2.48)		63 (2.48)	63 (2.48)	63 (2.48)			