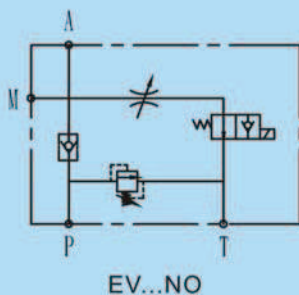
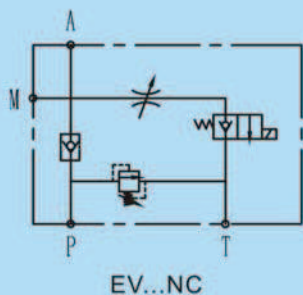


Manifold with Valves Series

EV-04 Series Thread Type Lift Valve

Symbol



Technical data

Model		EV-04
Max. flow rate (l/min)		40
Max. working pressure (bar)		250
Material		Aluminum 6061-T6
Weight (kgs)	Standard	1.8
	With pressure gauge	2
Min. working voltage		90% of rated voltage
Hydraulic fluid		Mineral oil
Seal material		NBR seals
Temperature range (°C)		-30 to +80
Viscosity range (mm²/s)		2.8 to 500
Oil cleanliness class according to ISO4406		Class 20/18/15

How to order

EV	04	G	NC	P	G24	Z5L
Product type	Size	Port thread & size	Normal state	Pressure gauge	Input voltage	Connector type
Thread type lift valve	04	G: BSP 3/8" ZG: BSPT 3/8" Z: NPT 3/8"	NO: Normally open NC: Normally closed	No code: Standard P: With pressure gauge (0~250bar)	G12: DC12 G24: DC24 W110: AC110 W220: AC220	DL: Double lead Z5L: Plug-in connector with light

A

B

C

D

E

F

G

H

I

J

K

L

M5

N

O

P

Manifold with Valves Series

EV-04 series valve dimensions

Unit: mm

