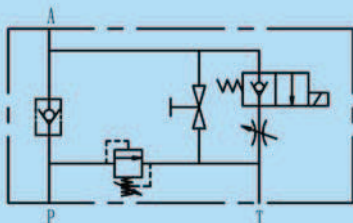


Manifold with Valves Series

ET-04 Series Thread Type Lift Valve

Symbol



Technical data

Model	ET-04
Max. flow rate (l/min)	40
Max. working pressure (bar)	250
Material	Aluminum 6061-T6
Weight (kgs)	2.6
Min. working voltage	90% of rated voltage
Hydraulic fluid	Mineral oil
Seal material	NBR seals
Temperature range (°C)	-30 to +80
Viscosity range (mm ² /s)	2.8 to 500
Oil cleanliness class according to ISO4406	Class 20/18/15

How to order

ET	04	G	G24	Z5L
Product type	Size	Port thread & size	Input voltage	Connector type
Thread type lift valve	04	G: BSP 1/2" ZG: BSPT 1/2" Z: NPT 1/2"	G12: DC12 G24: DC24 W110: AC110 W220: AC220	DL: Double lead Z5L: Plug-in connector with light

A

B

C

D

E

F

G

H

I

J

K

L

M3

N

O

P

Manifold with Valves Series

ET-04 series valve dimensions

Unit: mm

M4

